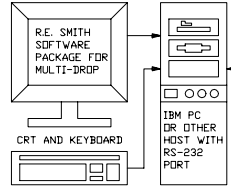
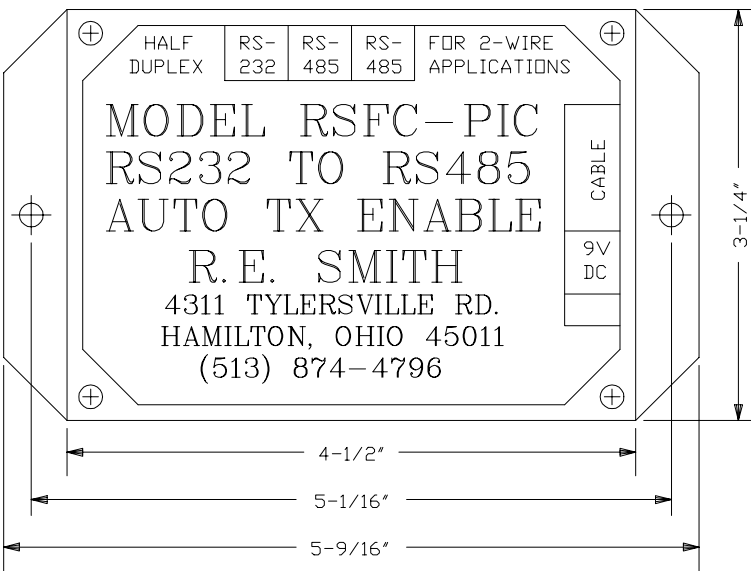


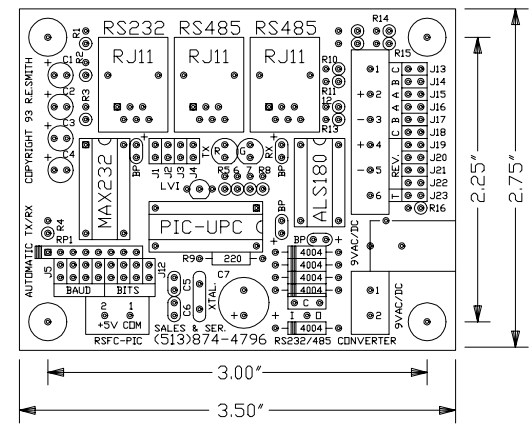
HALF RS- RS- RS- FOR 2-WIRE
 DUPLEX 232 485 485 APPLICATIONS
MODEL RSFC-PIC
RS232 TO RS485
AUTO TX ENABLE
 R. E. SMITH
 4311 TYLERSVILLE RD.
 HAMILTON, OHIO 45011
 (513) 874-4796



25-PIN, 6-WIRE INTERFACE CABLE FOR IBM PC 25-PIN M-DSUB RS-232 RJ-11				IVORY DR BLACK BACKSHELL 9-PIN, 6-WIRE INTERFACE CABLE FOR IBM PC 9-PIN M-DSUB RS-232 RJ-11				GRAY BACKSHELL ONLY 9-PIN, 6-WIRE INTERFACE CABLE FOR IBM PC 9-PIN M-DSUB RS-232 RJ-11			
1 - FG - XXX	RXD GRN 4	1 - DCD - INP	TXD YEL 5	1 - DCD - INP	TXD BLK 5	1 - DCD - INP	TXD BLK 5				
2 - TXD - OUT	TXD YEL 5	2 - RXD - INP	RXD GRN 4	2 - RXD - INP	RXD RED 4	2 - RXD - INP	RXD RED 4				
3 - RXD - INP	DIR BLK 2	3 - TXD - OUT	DIR - ALT)	3 - TXD - OUT	DIR - ALT)	3 - TXD - OUT	DIR - ALT)				
4 - RTS - OUT	+5V WHT 1	4 - DTR - OUT	GND RED 3	4 - DTR - OUT	GND GRN 3	4 - DTR - OUT	GND GRN 3				
5 - CTS - INP	+5V BLU 6	5 - GND - XXX	+5V BLU 6	5 - GND - XXX	+5V GRY 6	5 - GND - XXX	+5V GRY 6				
6 - DSR - INP	GND RED 3	6 - DSR - INP	DIR BLK 2	6 - DSR - INP	DIR YEL 2	6 - DSR - INP	DIR YEL 2				
7 - GND - XXX	8 - DCD - INP	7 - RTS - OUT	+5V WHT 1	7 - RTS - OUT	+5V BLU 1	7 - RTS - OUT	+5V BLU 1				
8 - DCD - INP	<DIR - ALT)	8 - CTS - INP		8 - CTS - INP		8 - CTS - INP					
20 - DTR - OUT		9 - RI - INP		9 - RI - INP		9 - RI - INP					
PINS 9-25											



ENCLOSURE PHYSICAL DIMENSIONS ACTUAL SIZE (1:1)



CIRCUIT BOARD PHYSICAL DIMENSIONS ACTUAL SIZE (1:1)

This drawing is the property of R. E. SMITH and shall not be used except with the written permission of R. E. SMITH; no copies shall be made of it and all proprietary rights in the matter contained in this drawing are the property of R. E. SMITH. COPYRIGHT - R. E. SMITH, 1994	DRAWN BY RES	SUBJECT RSFC PHYSICAL		
	DATE 3-4-94	FOR COMM CONVERSION		
	SCALE NONE	RES	R. E. SMITH 4311 TYLERSVILLE RD. HAMILTON, OHIO 45011	DWG. NO. 9312-10001
	SHEET 1 OF 1	RSFCBOX	CHKD. BY RES	REV. A