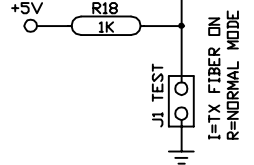


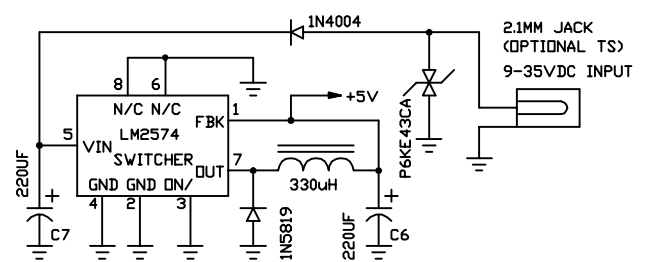
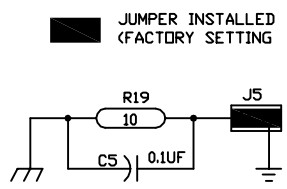
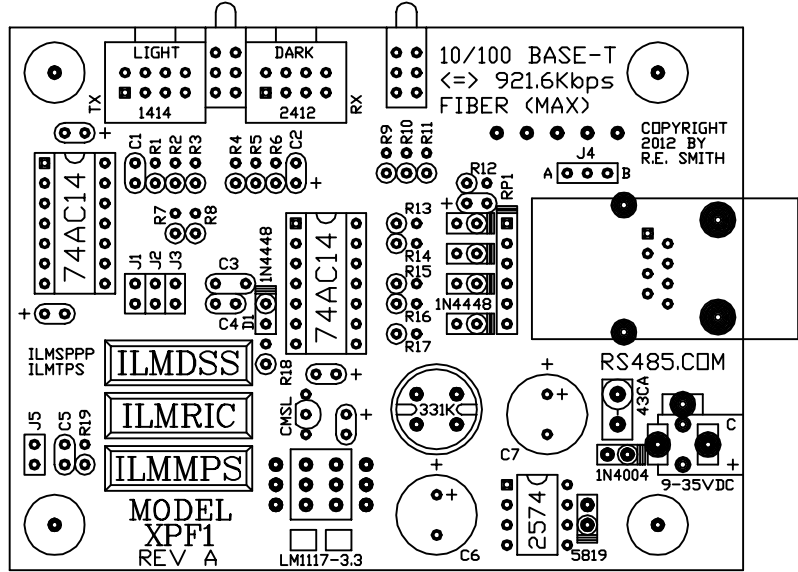
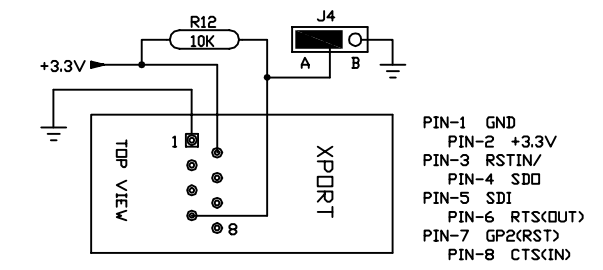
STANDARD VERSION  
 J2 TX CURRENT  
 I 67mA  
 R 55mA (85%)



# MODEL XPF1 REV. A

**RESmith**  
 WWW.RS485.COM  
 10330 CHESTER ROAD, CINCINNATI, OHIO 45215  
 513-874-4796

LINK: [rs485.com/pxpf1.html](http://rs485.com/pxpf1.html)



ENET 10-100-BASE-T<=>MM-FIBER CONVERTER UP TO 921.6KBPS

M1 = 3.50" X 2.75"

This drawing is the property of R. E. SMITH and shall not be used except with the written permission of R. E. SMITH. No copies shall be made of it and all proprietary rights in the matter contained in this drawing are the property of R. E. SMITH. COPYRIGHT - R. E. SMITH, 2002-2014		DRAWN BY RES	SUBJECT MODEL XPF1	
SHEET 1 OF 1		DATE 6-21-12	FOR E-NET 10/100-BASE-T	
XPF1		SCALE NONE	RES R. E. SMITH 10330 CHESTER ROAD CINCINNATI, OH 45215	
CHKD. BY RES		DVG. NO. XPF1		REV. A